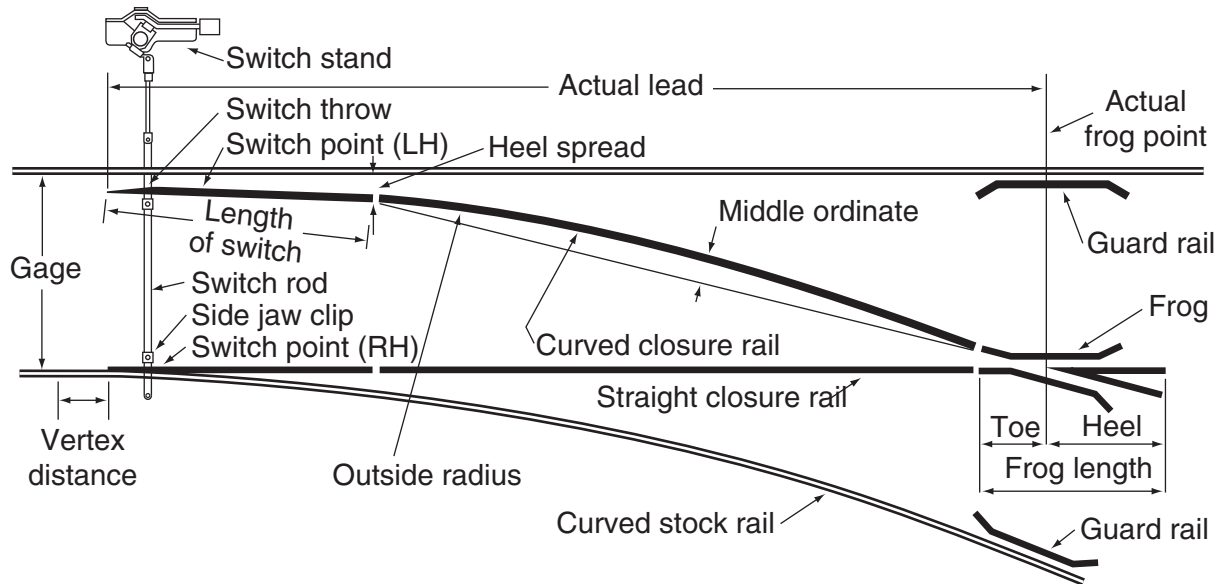


TURNOUTS

Standard Complete Turnout



The next pages present the typical designs for the different components that form a turnout. These are the configurations most often requested, though they can be adjusted to meet specific project needs. For mining and tunneling operations, turnouts can be pre-assembled and installed on steel ties, or delivered as separate parts for on-site assembly.

Track-Work Formations



Diamond Crossing



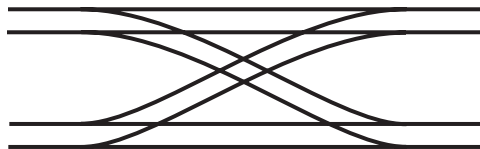
Left Hand Crossover



Straight Crossing



Left Hand Turnout



Double Hand Crossover



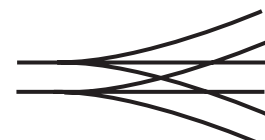
Right Hand Turnout



Equilateral Turnout



Right Hand Crossover



3 Way Turnout