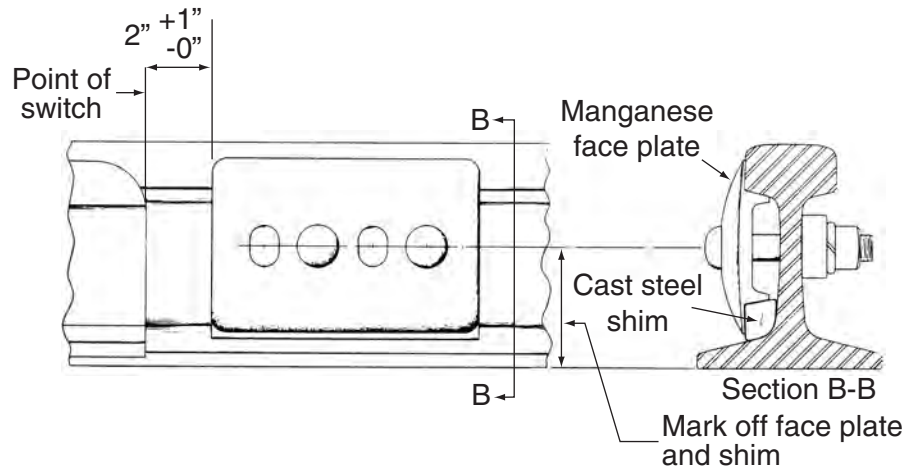




## SWITCH POINT PROTECTORS & GUARDS



The Riemsarail Switch Point Protector extends the lifespan of switch points by absorbing the impact from passing wheels. It briefly diverts the wheel flange so it bypasses the tip of the switch point. This protector is attached to the inside of the straight stock rail approaching the switch. Typically, it's positioned about two inches ahead of the switch point tip, although the distance may be adjusted depending on traffic speed and conditions. It's available in most common rail sizes, and its reversible design allows for longer service life. Each unit comes complete with a manganese-steel face plate, bolts, nuts, spring washers, and a steel shim.

### Model FM Switch Point Guard



When properly installed and well maintained, switch point guards serve as valuable safety devices and maintenance aids. They help prolong the service life of expensive switch points by redirecting wheels away from the vulnerable tip. This same deflection also enhances safety by reducing the chance of a worn wheel flange “picking the point” and causing a derailment. Additionally, the structural reinforcement provided by a switch point guard can extend the life of switch components and lower the risk of track spreading or rail roll-over.

The Riemsarail Model FM Switch Point Guard features an adjustable, replaceable wear bar made from manganese steel. As the bar wears, it can be shifted outward to maximize its lifespan, and once fully worn, it can be replaced without disturbing the existing track structure. Model FM is available as a basic unit for setups without a gage plate or can be made to fit over most standard gage plates. When ordering, please provide tie spacing details and specify if the unit should fit over an existing gage plate—if so, include the style of braces used with that gage plate.