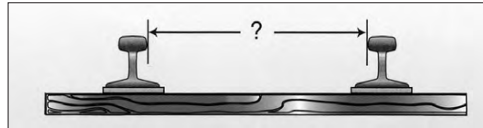




TRACK GAGING TOOLS

How to Measure Track Gauge

Most railway tracks in North America are constructed to a Standard Gauge of 56-1/2 inches, which measures the distance between the inner faces of the rail heads, taken 5/8 inch below the top of the rail head. Tracks with a gauge narrower than 56-1/2 inches are considered narrow gauge, commonly used in settings like mining railroads. Broad gauge tracks exceed 58 inches and are typically employed by transit systems to accommodate wider and more spacious passenger cars.



Levels & Gages



PG-2 Pipe Track Gage, 15 lbs



#3 Aluminum Track Gage, 6 lbs



#2 Combination Track Level, 5 lbs



#23 Combination Level & Gage, 5 lbs



Two Piece Adjustable Aluminum Level & Gage, 11 lbs



Three Piece Adjustable Aluminum Level & Gage, 11 lbs



WL-2 Wood Track Level, 8 lbs

Rolling Track Gauge Reader

This tool enables workers to inspect long stretches of track efficiently, without needing to bend down every few feet to measure the gauge. It can measure gauge variations up to 2 inches, covering from 56 inches to 58 inches, suitable for standard gauge track. The gauge reader is composed of two spring-loaded telescoping steel pieces that are quickly assembled directly on the track. It features hardened steel roller bearings that are fully insulated from the rails to ensure smooth movement.



Accessories for Track Gauge Reader



Digital Track Level, 5 lbs



Carrying Case, 19 lbs



Distance Counter, 5 lbs