

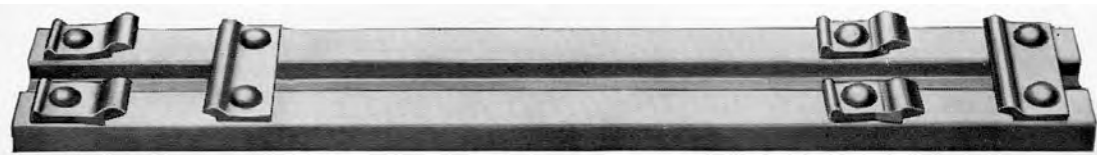
STEEL MINE TIES

Steel Ties with Outside Stationary Clips



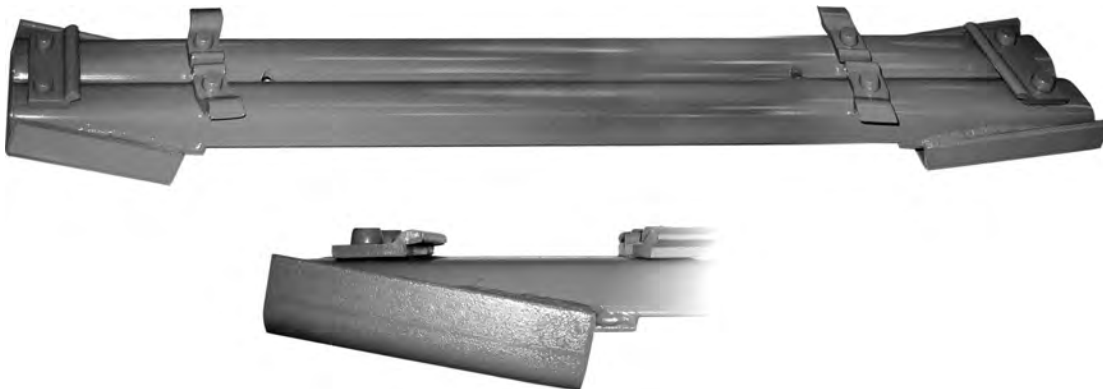
The most commonly used design across all sections is the outside stationary clip tie. This configuration features four movable rolled-steel clips along with two fixed-position clips at each outer end (as shown in the illustration). All clips are precisely positioned to accommodate a specific rail profile.

Steel Ties with Staggered Clips



An alternative option is the staggered clip tie, which also incorporates four movable steel clips but arranges the two stationary clips differently - one positioned internally at the first end and externally at the opposite end. This unique arrangement proves particularly valuable when tie replacement is necessary without compromising track gauge integrity. Like the standard version, clip spacing is customized for a particular rail section.

Tunnel Ties



Riemsarail offers purpose-engineered tunnel ties specifically developed for tunneling applications where the base surface may be irregular. These specialized ties maintain correct track alignment without requiring additional blocking materials. Each tunnel tie is custom-designed according to project specifications, with engineering review to verify load-bearing capacity.