



# STEEL MINE TIES

## Riemsarail Steel Ties: Superior Performance for Mining Applications

Riemsarail steel ties offer significant benefits over wooden ties in mining environments. They maintain secure rail positioning, ensuring consistent gauge and proper track alignment. These ties deliver exceptional longevity, even under extreme operating conditions, and are immune to spike damage or rot. Additionally, they present no fire risk.

### Key Advantages:

- Lightweight design – A single worker can easily manage bundles of five ties
- Low-profile construction – Preserves critical overhead clearance in low-seam operations
- Dual-material applications – Heavier Riemsarail ties work effectively as gauge stabilizers when spaced every 3-4 wooden ties on main haulage tracks

### Extended Service Life Solution:

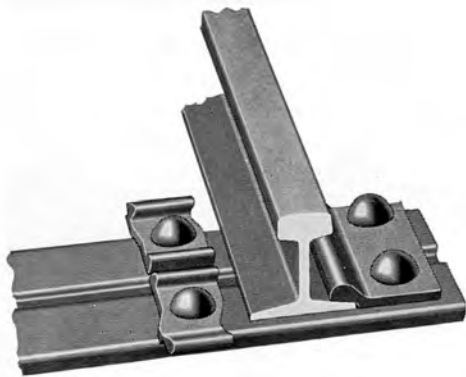
Incorporating steel ties at 6'-10' intervals reduces stress on wooden ties during early decay stages, significantly prolonging their usability.

### Reinforced Hybrid Option:

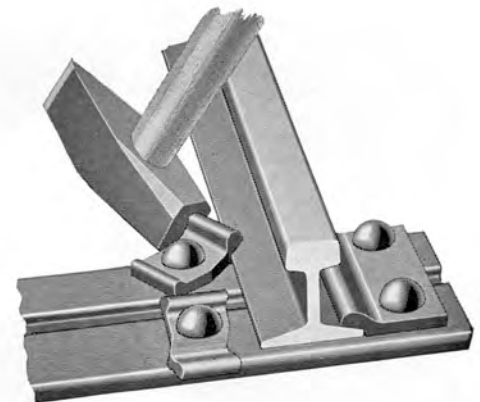
For enhanced durability, Riemsarail offers steel ties with bolted wood bases. These feature grooved oak foundations (treated or untreated options available) that securely fasten beneath the tie for added stability.

### Simplified Installation Process:

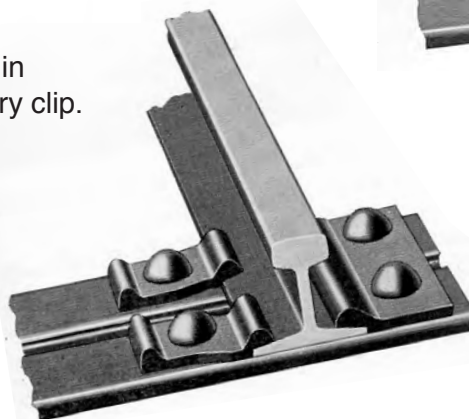
Installing Riemsarail steel ties with riveted clips requires minimal effort. Both straight and upset-end varieties install identically, eliminating the need for track gauging during placement.



1. The rail is placed on the tie, in position against the stationary clip.



2. Blows of a hammer turn the movable clips into position over the rail base.



3. The clips hold the rail firmly in place, to accurate gage.