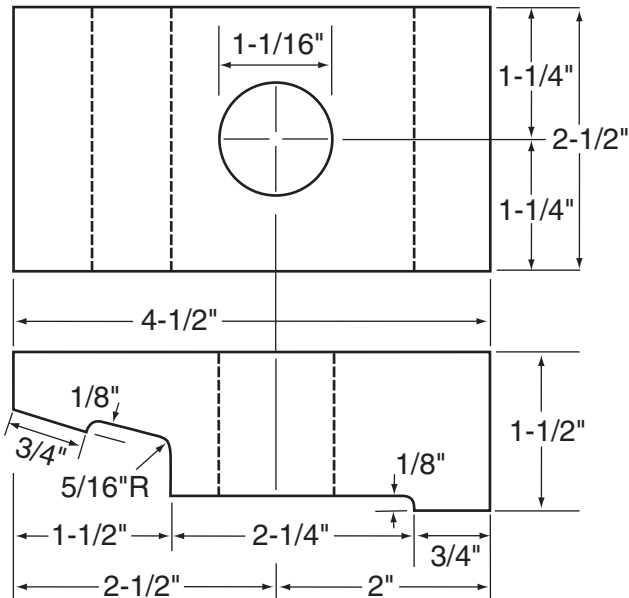
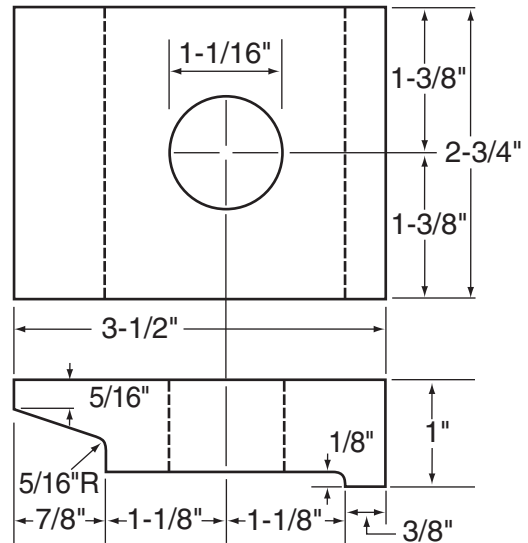




ONE-PIECE RAIL CLIPS, CRANE STOPS



No. 171 Weight - 3.60 lbs.
For 171 lb. Crane rail.



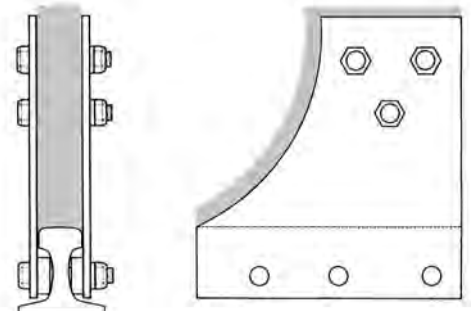
No. 175 Weight - 2.19 lbs.
For 175 lb. Crane rail.

Crane Stops

This Heavy-Duty Crane Stop is designed for use with all rail sizes up to and including 175 pounds per yard, and is especially suited for applications involving large cranes. It is custom-fabricated to the required height and shape to match the crane's wheel diameter. When ordering, please provide the rail size and wheel diameter.

Cushion-Slide Crane Stops

Drag plates allow the wedge component to move a short distance, helping to absorb the force of impact. On smaller rail sizes, these plates may obstruct hook bolts, so it's important to ensure adequate sliding clearance between cranes. The required stopping distance will vary depending on the crane's speed and weight, and these stops should not be used at the end of a crane runway.



Wheel Contact Type Wedges are manufactured to fit a specific wheel diameter, and plates are tailored to match the rail's size and profile.

Bumper Contact Type

This system is compatible with most standard crane bumpers. The wedge extends 15 inches above the top of the rail, and the bottom edge of the crane bumper should not exceed 12 inches above the rail. All plates are cut precisely to fit a designated rail section and size.