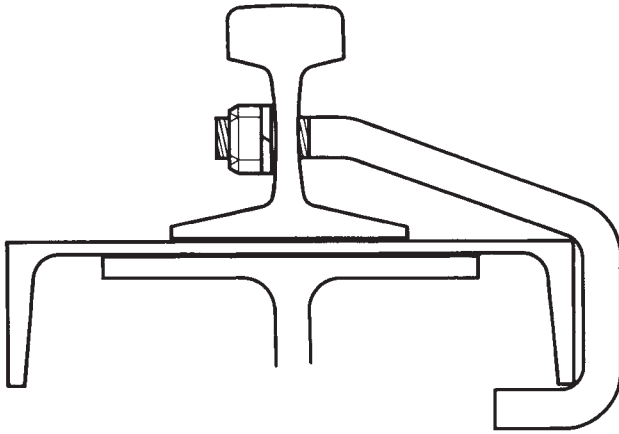
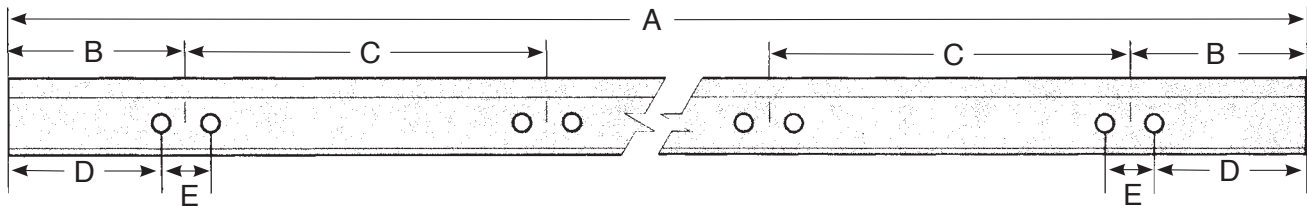


# HOOK BOLTS



Hook bolts are commonly used to secure lighter rail sections (generally up to 85 pounds) to structural channels (as illustrated) or directly to crane rail beams. These bolts are threaded, allowing for up to  $\frac{1}{2}$  inch of lateral adjustment in either direction, and are supplied complete with hex nuts and lock washers. When placing an order, please indicate the rail section, bolt diameter, and the dimensions and weight of the supporting beam or channel.

Hook bolts are generally installed in pairs, spaced four inches apart every two feet. Unless otherwise requested, the holes are drilled  $\frac{1}{8}$  inch larger than the bolt diameter, with the spacing detailed in the accompanying table. In most cases, hook bolts are the same diameter as those used for splice bars, and the hole elevation matches that of the splice bar holes.



Remaining holes  
on 24" centers

Hook Bolt Spacing *						
Rail Weight	A	B	C	D	E	No. holes per rail
12 lb to 60 lb	20'	14"	22"	12"	4"	20
12 lb to 60 lb	30'	14"	22"	12"	4"	30
25 lb to 60 lb	40'	14"	22"	12"	4"	40
60 lb to 80 lb	33'	18"	24"	16"	4"	32
80 lb to 85 lb	39'	18"	24"	16"	4"	38