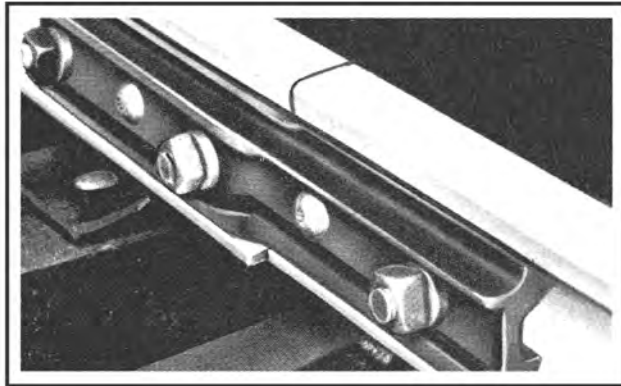


COMPROMISE AND INSULATED JOINT BARS

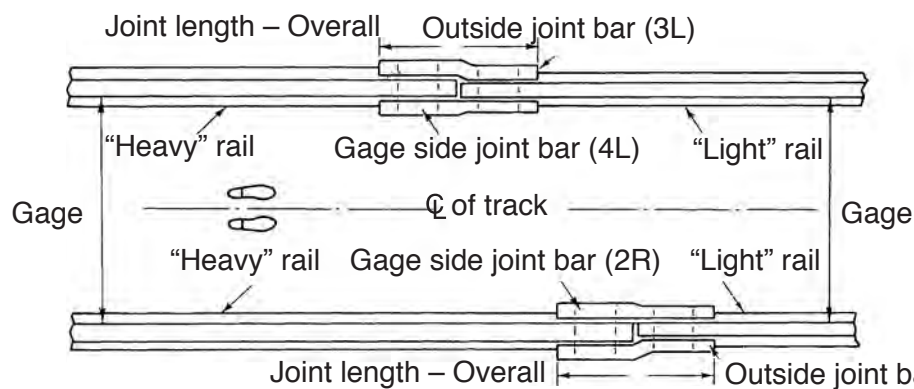


Engineered to connect different rail sizes while maintaining proper gauge and surface alignment, our compromise joint system uses two specialized bars: an outside joint bar and a gauge-side joint bar.

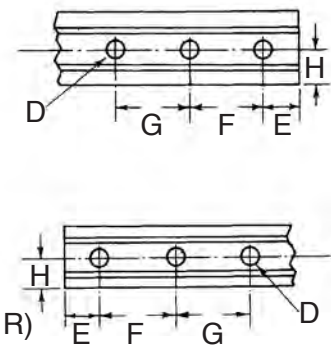
These precision components ensure smooth transitions between varying rail sections while preserving track integrity and operational safety.

- 1) bolt holes are alternately round and oval,
- 2) bolts are not provided, and
- 3) rail joint opening is 1/8".

To Determine Right-Hand or Left-Hand Joint



To Determine Bolt Hole Locations



To properly identify joint orientation, stand between the "Heavy" rails facing toward the "Light" rails. The joint on your right is designated as a "Right Hand" joint, while the joint on your left is a "Left Hand" joint. The combination of robust steel construction and advanced insulation materials ensures reliable performance in demanding track conditions. (Note: Right and Left Hand joints are typically required unless the rail head width difference is less than 3/16")* These components maintain proper gauge and running surface alignment while providing necessary electrical isolation where required.

- Strong heat-treated steel core provides full support for rail ends
- Polyurethane insulation completely surrounds the core - including the bolt hole - providing superior insulating properties
- Resistant to moisture, abrasion, cracking, grease, oil, brine, weather and insects
- Unaffected by temperature extremes
- Conforms to rail irregularities

