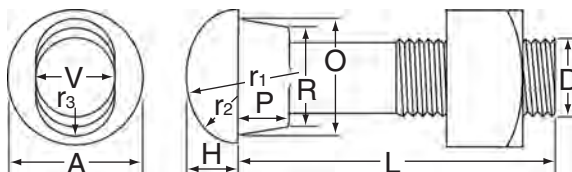


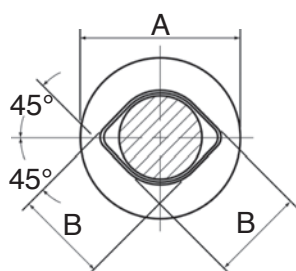
Track Bolts

Diam. "D"	Length "L"	Avg. no. in 100# can
inches	inches	pieces
1/2	1-3/4	478
1/2	2	478
1/2	2-1/4	417
5/8	2-1/2	238
3/4	3	139
3/4	3-1/2	134
3/4	4	125
3/4	4-1/2	120
7/8	4-1/2	80
7/8	5	77
1	5	55
1	5-1/2	52
1	6	50
1-1/16	6	47
1-1/16	6-1/2	45
1-1/8	6-1/2	36

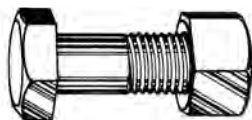


Button head oval neck track bolts are specifically designed with an oval-shaped neck and a rounded head for use in splice bar connections. The oval neck fits securely into the matching oval hole of the splice bar, which allows the nut to be tightened without requiring a second tool to prevent the bolt from rotating. These bolts are produced in accordance with ASTM A-183 standards, available in both heat-treated (Grade 2) and non-treated (Grade 1) versions. Each bolt is paired with a heavy square nut, and they are packaged in 200-lb containers including both bolts and nuts. The table to the left lists the standard sizes typically carried by Riemsarail. Additionally, Riemsarail offers extended-length bolts suitable for heel blocks and cast frogs, and can also provide custom-sized bolts upon request.

Diamond neck track bolts are stocked in the sizes indicated below.



Diam.	Length	Avg. no. in 100# can
inches	inches	pieces
7/8	4-1/2	80
7/8	5-1/2	70
1	5-1/4	50
1	5-3/4	50



Hex head bolts, generally manufactured to ASTM A-325 standards, are primarily used in crane rail joints where a tight fit is required.



Square head bolts are typically used in heel blocks and at the toe of self-guarded frogs, and can also be supplied with cotter pins for use in switch rods. These bolts are made to meet SAE Grade 5 standards.

Railway spring washers, made from high-strength steel, are engineered to retain bolt tension under all types of conditions. They are available in two main configurations.



AREMA



Plain Pattern